



BEYOND SECURITY

**KABA®**

# Easy Entrance TPB-M04



**An access solution for sanitary facilities that is clean and profitable**

"Our café was a great success from the very beginning, it was just the sanitary facilities that gave us cause for concern. Every day, dozens of people were using our toilets without buying anything in the café, thus increasing water and cleaning costs without generating any revenue. A few months ago we installed a Kaba access solution – the investment costs have already paid for themselves, and with the steady income we are able to cover the costs of maintaining and cleaning the sanitary facilities."







The child's entrance also serves as a means of entrance for people with limited mobility, for materials transportation and as an additional emergency route.

## Benefits of Easy Entrance TPM-M04

The access solution for customer loyalty and an increase in turnover

- > Increase in turnover with entrance reimbursement concept
- > Positive image thanks to improved toilet cleanliness
- > Greater level of acceptance by the user
- > Optimised cleaning costs
- > Short payback times
- > Report function as proof of tax
- > Optimisation of business processes with reporting functions
- > Sustainable vandalism prevention
- > Straightforward user-friendliness thanks to ergonomic design

### "Easy Entrance"


Businesses with high public footfall require state-of-the-art and cost-oriented management of their sanitary facilities. Kaba has developed a special solution that facilitates efficient management of access to areas with entrance fees - "Easy Entrance", a modular system based on a tripod barrier with integrated payment machine and reimbursement concept.

### The principle

For consuming guests, use of the sanitary facilities is free of charge as the entrance fee is reimbursed with a voucher. All other users pay a fee which contributes towards the cleaning and maintenance of the facilities. This results in improved cleanliness and a greater feeling of well-being in the facilities, with no additional cost to the operator, and an increase in turnover.



# Two practical examples

## Example 1: Shopping centre/no voucher system

Users 		Income from toilet entrance fee (€0.50/person)
Daily	400	€ 200
Monthly	12,000	€ 6,000
Annually	146,000	€ 73,000

## Example 2: Busy filling station or motorway services/with voucher system

Use of vouchers: coffee, ice cream, sweets, drinks

Users	50% of users do not consume anything. Income from toilet entrance fee (€0.50/person).	50% of users redeem the voucher (average turnover per voucher €0.75 to €1.10)		Total income with Easy Entrance System
				

Daily	500	€ 125	€ 187 - 275	€ 312 - 400
Monthly	15,000	€ 3,750	€ 5,610 - 8,250	€ 9,360 - 12,000
Annually	182,500	€ 45,625	€ 68,255 - 100,375	€ 113,880 - 146,000

## The result

Additional income permits optimised cleaning of sanitary facilities.	This results in	happier customers and additional turnover with the entry reimbursement principle.
--	-----------------	---



Well-known Easy Entrance reference customers have reported 10 to 15% turnover increases in their cafés and shops. We would be happy to compile a customised business case for you. Please get in touch with our sales team!

# So how does it work?

The entrance to areas subject to entrance fees is equipped with the Easy Entrance TPB-M04 payment machine, which issues a voucher for reimbursement of the entrance fee.



- 1 Payment**  
The customer pays a fixed amount at the payment machine.



- 2 Issuing the voucher**  
A voucher is printed. The customer takes the voucher and any change.



- 3 Entry**  
The system grants access to the sanitary facilities. Children can access the toilets free of charge through the child's door.



- 4 Exiting the sanitary facilities**  
The facilities can be exited freely.



- 5 Redeeming the voucher**  
When paying the bill in the café or retail area, the customer's fee is reimbursed on presentation of the voucher. The voucher can be reimbursed up to its expiry date - customers can collect vouchers and redeem them.

# Easy Entrance



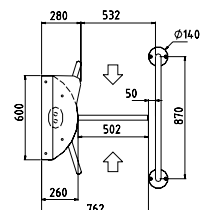
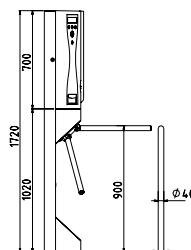
Standard colour RAL 5012 light blue



Colour RAL 7043, traffic grey B with no surcharge

Standard units		TPB-M04 Light	TPB-M04 Standard
<b>Construction</b>	Description		
	Usable bar length	532	532
	Width	762	762
	Height	1720	1720
	Depth	805	805
	Material	Housing and rigid crossbars in stainless steel AISI 304. Machine door with stickers in high-performance film.	
Basic equipment		Control unit, display, coin changer and open coin collector. Identical locking system at machine and cashier unit doors.	
Passage limitation		Optional pedestrian guiding bars or wall provided by the customer.	
<b>Finish</b>		Stainless steel semi-gloss smooth finish. Plastic painted in RAL 5012 (light blue).	
<b>Function</b>		Controlled access via coin payment. User instructions via display. Adjustable display languages and tariffs. Type 2****	
<b>Electrical system</b>		Print out of reports (paper max. 80 g/m²).	Print out of reports and tickets via presenter (paper max. 80 g/m²).
			Use of Mifare cards via card reader. Including seven Mifare cards: 3 cards for single release, 2 cards for continuous release, 2 cards for report.
		The control unit is integrated into the unit.	The control unit is integrated into the unit.
		Power supply 110-230 V AC, 50/60 Hz.	Power supply 110-230 V AC, 50/60 Hz.
<b>Installation</b>		Dowelled on finished floor level, FFL.	Dowelled on finished floor level, FFL.
		Not suitable for outdoor installation!	Not suitable for outdoor installation!
<b>Protection classes</b>			
<b>Accessories</b>		One Kaba-design ticket roll (max. 80 g/m²) per unit included in the scope of delivery.	One Kaba-design ticket roll (max. 80 g/m²) per unit included in the scope of delivery (for optional printer, with additional cutter ticket roll with 140 g/m²).

- \* Type 0 Manual motion; mechanically free in 1 direction/ opposite direction blocked
- \*\* Type 1.1 Manual motion; electrically controlled in 1 direction/ opposite direction blocked (closed in both directions with no current)
- \*\*\* Type 1.2 Manual motion; electrically controlled in 2 directions (closed in both directions with no current)
- \*\*\*\* Type 2 Power-assisted motion; servo positioning drive/electrically controlled in 2 directions





### TPB-M04 Premium

532

762

1720

805

Housing and collapsible crossbars in stainless steel AISI 304.  
Machine door with stickers in high-performance film.

Control unit, display, coin changer and open coin collector.  
Identical locking system at machine and cashier unit doors.

Optional pedestrian guiding bars or wall provided by the customer.

Stainless steel semi-gloss smooth finish.

Plastic painted in RAL 5012 (light blue).

Controlled access via coin payment.

User instructions via display.

Adjustable display languages and tariffs.

Type 2\*\*\*\*

Print out of reports and tickets via presenter including cut-  
ter (paper max. 140 g/m<sup>2</sup>).

Use of Mifare cards and acceptance of barcode tickets via card slot  
reader. Including seven Mifare cards: 3 cards for single release, 2  
cards for continuous release, 2 cards for report.

The control unit is integrated into the unit.

Power supply 110-230 V AC, 50/60 Hz.

Dowelled on finished floor level, FFL.

Not suitable for outdoor installation!

One Kaba-design ticket roll (max. 140 g/m<sup>2</sup>) per unit included in the  
scope of delivery.

### Tripod barrier TPB-L07

Housing and pedestals in a single unit (open design).

Housing, pedestals and rigid cross-  
bars in stainless steel AISI 304.

Stainless steel semi-gloss smooth finish.

Type 0\*

Type 1.1\*\*

Type 1.2\*\*\*

Type 2\*\*\*\*

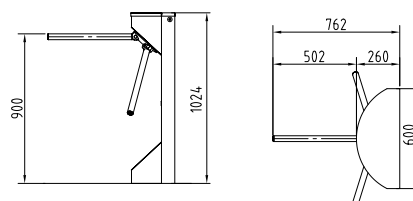
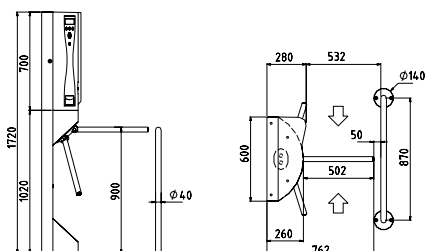
The control unit is integrated into the unit.

Power supply 100-230 V AC, 50/60 Hz, standby power 10 VA.

Dowelled on finished floor level, FFL.

Suitable for outdoor installation!

Housing IP33, components conducting supply voltage: IP43.



All measurements in mm

# Options (dependent on unit type)

Options for TPB-M04		Light	Standard	Premium
<b>Construction</b>	Coin collector with and without lock.	•	•	•
	Various lock cylinders for machine and cashier unit doors.	•	•	•
<b>Finish</b>	Machine door in RAL 7043 (traffic grey B) with no surcharge.	•	•	•
<b>Function</b>	Setup of additional tariffs including additional ticket layout, extension of report and button for selection of tariff.	•	•	•
	Selectable local currencies instead of secondary currency (EUR).	•	•	•
	Various display languages possible.	•	•	•
	Collapsible crossbars.	•	•	
<b>Electrical system</b>	Units can be networked.		•	•
	Thermo printer with presenter.	•		
	Thermo printer with presenter and cutter.		•	
	Coins.	•	•	•
	Mifare card reader including seven Mifare cards in standard layout: 3 cards for single release, 2 cards for continuous release, 2 cards for report.	•		
	Mifare card slot reader with or without barcode, including seven Mifare cards in standard layout: 3 cards for single release, 2 cards for continuous release, 2 cards for report. Only valid at location in question.		•	
	Mifare cards in standard or customer layout.	•	•	•
<b>Installation</b>	Pallet with stainless steel ramp and rubber covering approx. 1.8 m x 1.5 m, height 32 mm.	•	•	•
<b>Accessories</b>	Easy Entrance card charger with program and desktop reader to restrict the volume of use and/or the period of use for Easy Entrance Mifare cards.	•	•	•
	Ticket paper 80 g/m <sup>2</sup> with standard print.	•	•	•
	Ticket paper 140 g/m <sup>2</sup> with standard print (dependent on printer).		•	•
	Printer cleaning set and scissors.	•	•	•
<b>Service</b>	Modifications to the configuration and layout.	•	•	•

Comparison of properties	Light	Standard	Premium
<b>Use of Mifare cards via card reader.</b>	<b>Option</b>	✓	✓
Use of Mifare cards via card slot reader.	✗	Option	✓
Acceptance of barcode tickets via card slot reader.	✗	Option	✓
Print out of reports (paper max. 80 g/m <sup>2</sup> ).	✓	✓	✓
Print out of tickets via presenter (paper max. 80 g/m <sup>2</sup> ).	Option	✓	✓
Print out of tickets via presenter (paper max. 140 g/m <sup>2</sup> ).	✗	Option	✓
Collapsible bar.	Option	Option	✓
Units can be networked.	✗	Option	Option
Use of multiple tariffs.	Option	Option	✓

## Options for TPB-L07

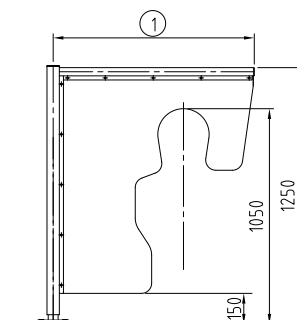
<b>Function</b>	Random generator.
	Counter.
	Emergency and escape route modules with emergency button, optional additional emergency button.
	Collapsible bars on unit type 1.1, 1.2 and 2. Automatic reset on type 2.
<b>Electrical system</b>	Push button on flat surface.
	Operating panels and frame or surface mount housing.
	Various signal devices.
	Distribution board (connection of max. 4 OPL possible) and power supply plug for supplying external nodes.
<b>Installation</b>	Pallet with stainless steel ramp and rubber covering approx. 1.8 m x 1.5 m, height 32 mm.



# Swing Door

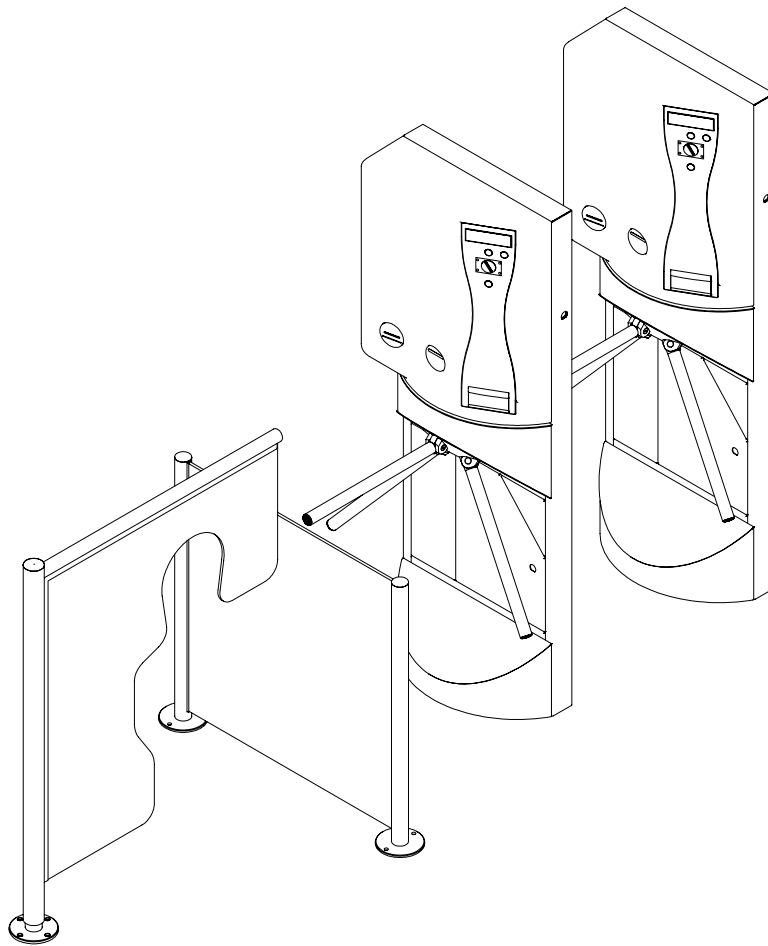


<b>Standard unit</b>		<b>HSD-L08</b>
<b>Construction</b>	Tubular column	In stainless steel AISI 304, Ø 60 with emergency exit function.
	Barrier element	Multi-layer panel with opening for children.
	Leaf radius (measure 1)	980 optional to minimum 650
	Leaf upper edge	1250
<b>Finish</b>		Stainless steel semi-gloss smooth finish.
		Child's entrance sticker set enclosed - dragon with king.
<b>Function</b>		Type 0 manual motion; mechanically free in both directions.
		90° opening in entrance and exit directions.
		When the half-height swing door is opened, an acoustic signal sounds.
		Manual motion from the zero position with a force of 90 Nm on the front door leaf end.
<b>Installation</b>		Dowelled on finished floor level, FFL.
		Not suitable for outdoor installation!

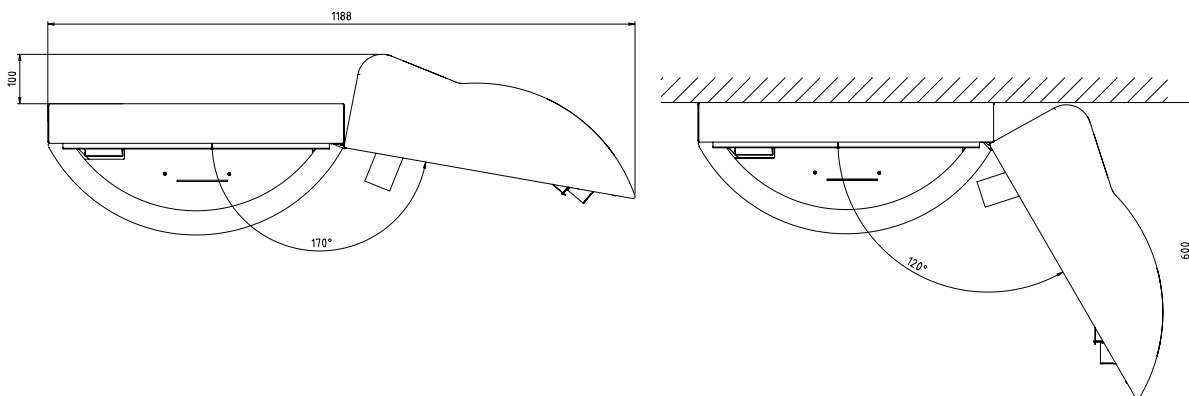


All measurements in mm

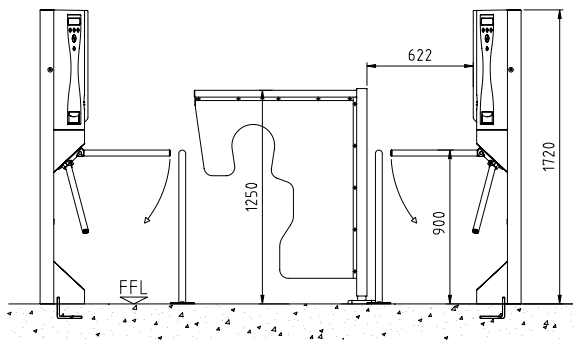
# Installation drawings



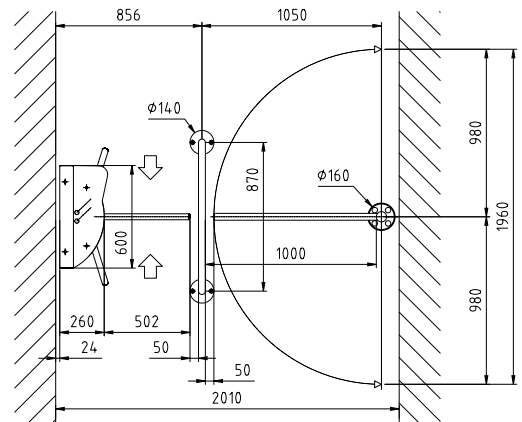
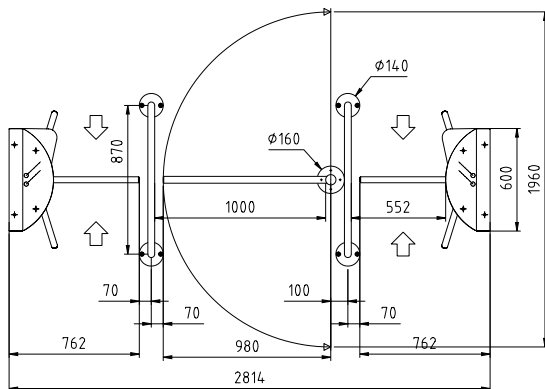
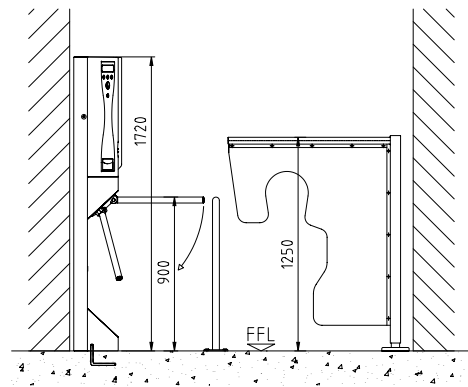
**Machine door open**



Example 1



Example 2



All measurements in mm





**Kaba Gallenschütz GmbH**  
Nikolaus-Otto-Straße 1  
77815 Bühl  
Germany  
Tel. +49 (0) 7223/286-0  
Fax +49 (0) 7223/286-111  
info@kgb.kaba.com  
[www.kaba-gallenschuetz.de](http://www.kaba-gallenschuetz.de)